

# Shoulder 好达

SHOULDER ELECTRONICS CO., LTD.

## SAW Components Data Sheet

PRODUCT 产品: SAW RESONATOR

MODEL NO 型号: HDR□□□M SMD-6

PREPARED 编制:

CHECKED 审核:

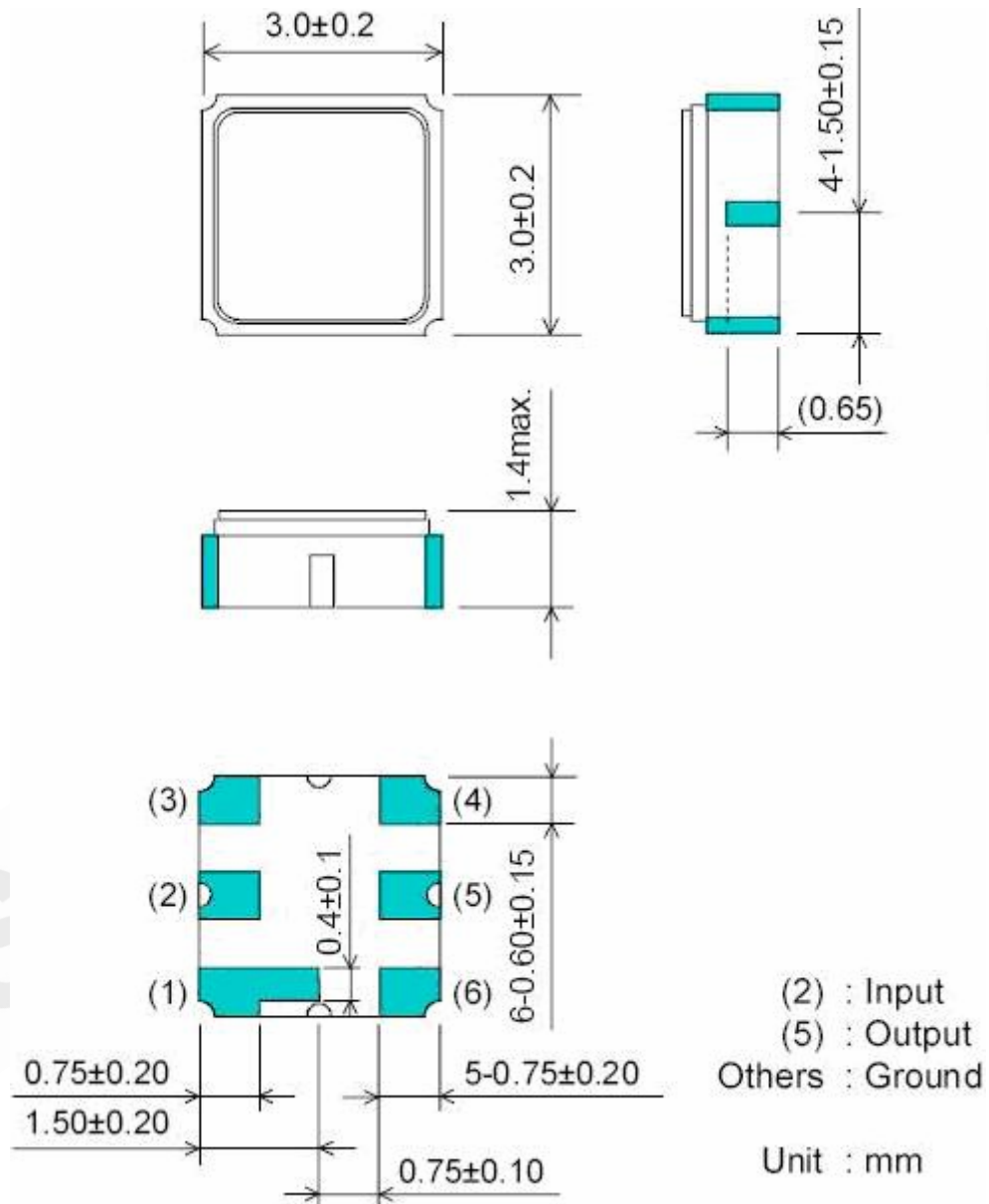
APPROVED 批准:

DATE 日期: 2007-01-25

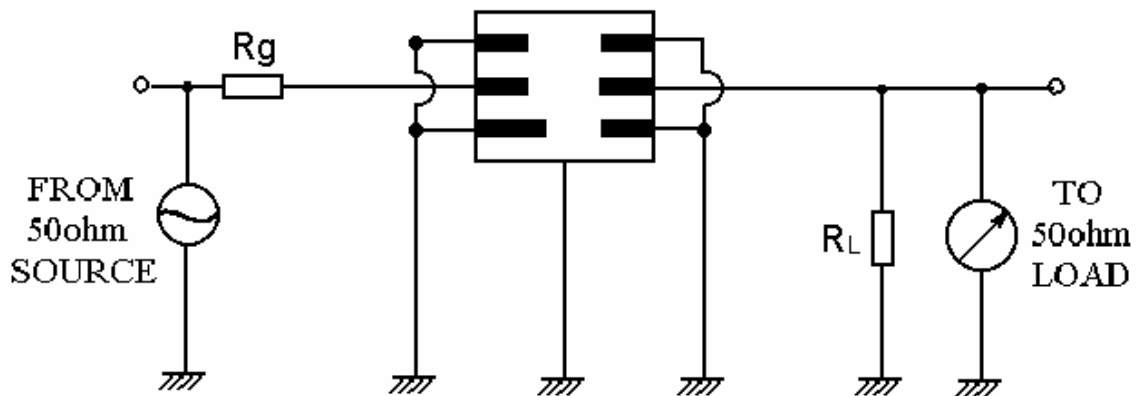
## 1.SCOPE

This specification shall cover the characteristics of 1-port SAW resonator used for remote-control security.

## 2. DIMENSION



### 3. TEST CIRCUIT



### 4. Electrical characteristics

Part number	min	typ	max	unit
Center Frequency	Table 1			
Insertion Loss		1.5	2.5	dB
Quality Factor Unload Q		11.000		
50 $\Omega$ Loaded Q		2.000		
Temperature Stability	Turnover Temperature		39	$^{\circ}\text{C}$
	Turnover Frequency		$f_0 \pm 2.7$	KHz
	Freq.temp.Coefficient		0.032	ppm/ $^{\circ}\text{C}^2$
Frequency Aging		$< \pm 10$		ppm/yr
DC. Insulation Resistance	1.0			M $\Omega$
RF Equivalent RLC Model	Motional Resistance R1		10	$\Omega$
	Motional Inductance L1		86	$\mu\text{H}$
	Motional Capacitance C1		1.56	pF
Shunt Static Capacitance	1.7	2.0	2.3	pF

**Table 1**

F <sub>0</sub> (MHz)	Frequency accuracy (KHz)	F <sub>0</sub> (MHz)	Frequency accuracy (KHz)
401.250	±75	447.275	±75
403.050	±75	447.325	±75
403.550	±75	447.625	±75
407.300	±75	447.675	±75
417.500	±75	447.725	±75
418.000	±75	479.500	±75
420.000	±75	497.500	±75
423.220	±75	824.000	±250
423.920	±75	842.000	±250
424.825	±75	857.650	±250
426.062	±75	866.000	±250
426.275	±75	868.000	±250
430.500	±75	868.300	±250
430.650	±75	868.320	±250
431.705	±75	868.350	±250
431.900	±75	868.500	±250
433.385	±75	868.750	±250
433.420	±75	868.950	±250
433.650	±75	887.000	±250
433.920	±75	905.800	±250
433.950	±75	914.000	±250
434.420	±75	914.500	±250
434.520	±75	915.000	±250
435.200	±75	916.300	±250
435.800	±75	916.500	±250
437.500	±75	916.800	±250
435.700	±75	927.000	±250